

The first report of *Nervilia lilacea* Jum. & H. Perrier (Orchidaceae, Epidendroideae) from Kenya and the Northern Hemisphere

Jing Tian^{1,2}, Vivian Kathambi^{1,2,3}, Peris Kamau⁴, Geoffrey Mwachala⁴,
Itambo Malombe⁴, Guang-Wan Hu^{1,2}

1 CAS Key Laboratory of Plant Germplasm Enhancement and Specialty Agriculture, Wuban Botanical Garden, Chinese Academy of Sciences, Wuban 430074, Hubei, China **2** Sino-Africa Joint Research Center, Chinese Academy of Sciences, Wuhan 430074, Hubei, China **3** University of Chinese Academy of Sciences, Beijing 100049, China **4** East African Herbarium, National Museums of Kenya, P.O. Box 451660-0100, Nairobi, Kenya

Corresponding author: *Guang-Wan Hu* (guangwanhu@wbcas.cn)

Academic editor: *M. Simo-Droisart* | Received 16 September 2019 | Accepted 30 October 2019 | Published 11 November 2019

Citation: Tian J, Kathambi V, Kamau P, Mwachala G, Malombe I, Hu G-W (2019) The first report of *Nervilia lilacea* Jum. & H. Perrier (Orchidaceae, Epidendroideae) from Kenya and the Northern Hemisphere. *PhytoKeys* 135: 35–38. <https://doi.org/10.3897/phytokeys.135.46629>

Abstract

Nervilia lilacea is recorded from Kenya as well as the Northern Hemisphere for the first time. A plate of ink drawing and a distribution map are provided based on the new collection.

Keywords

Flora of Kenya, illustration of *Nervilia lilacea*, new record, Orchidaceae, taxonomy

Introduction

Nervilia Commerson ex Gaudichaud-Beaupré in Freycinet (1829: 421) comprises ca. 80 species, distributed from tropical, subtropical and warm temperate regions of Africa, Asia, Australia, and the Southwest Pacific islands (Govaerts et al. 2019). There are 15 species of *Nervilia* recorded in Africa (Govaerts et al. 2019). Among these spe-

cies, five of them have been recorded in Kenya (Petersson 1990, 1991; Stewart and Campbell 1996; Olszewski 2004; Nusbaumer et al. 2011; Govaerts et al. 2019). In April 2018, during a field survey in Nandi Forest, *N. lilacea* Jumelle & Perrier (1912: 197) was collected from Kenya (the northern side of the equator) for the first time. We report it here with a plate of ink drawing and a distribution map based on the new collection.

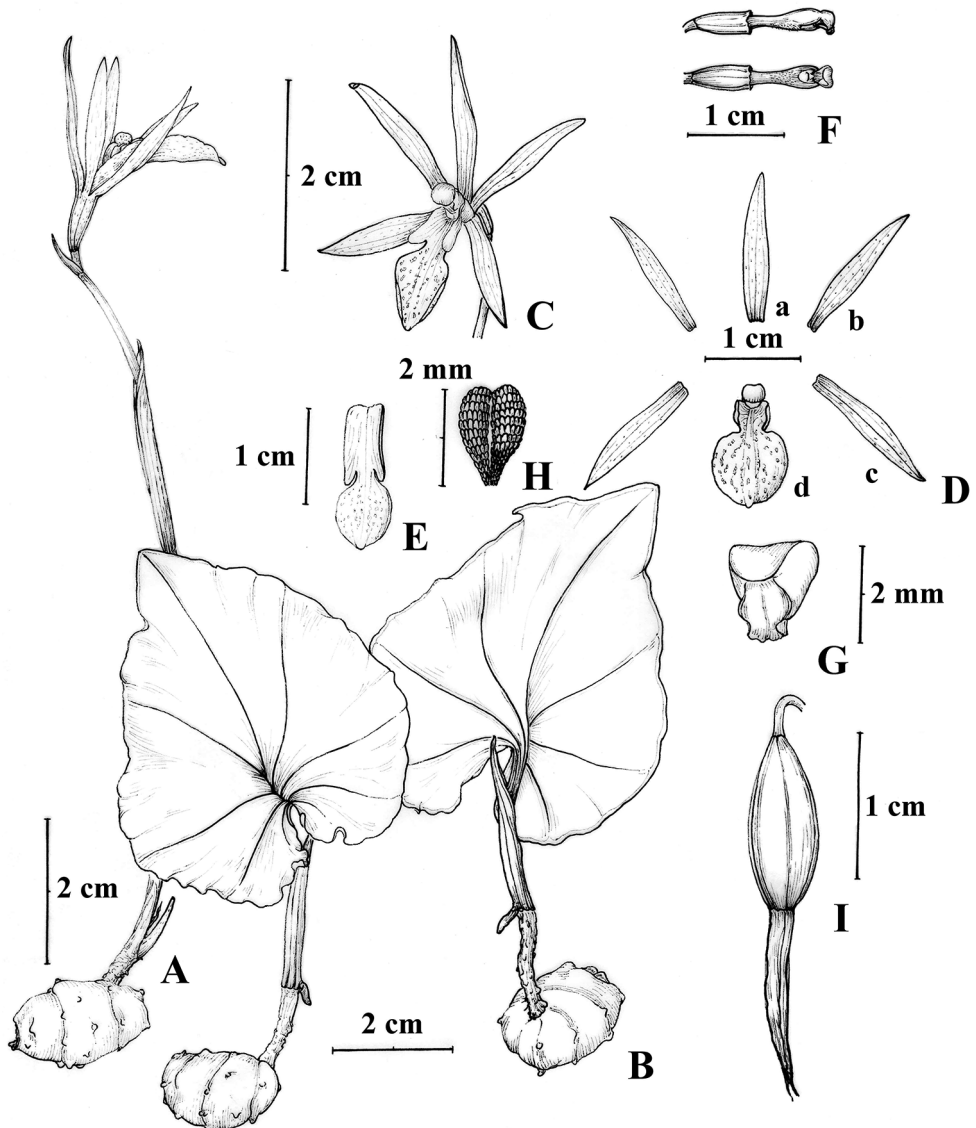


Figure 1. *Nervilia lilacea* **A** plant with flower **B** plant with leaf (adaxial and abaxial leaf) **C** flower, frontal view **D** floral pieces dissected (a dorsal sepal b lateral petal c lateral sepal d lip) **E** lip **F** column, lateral and ventral view **G** anther **H** pollinia **I** capsule (Jing Tian drew it from *FOKP-1530* specimen).

New record

Nervilia lilacea Jum. & H.Perrier, *Ann. Fac. Sci. Marseille* 21(2): 197, 1912

Fig. 1

= *Nervilia gassneri* Börge Pett. in *Nord. J. Bot.* 9: 492. 1990. Type. MALAWI: Southern Prov., Zomba Distr., Zomba Plateau, 1530 m, 15 July 1984. *Petersson and Gassner* 359 (holotype: UPS, image seen!; isotype: BP, K, image seen!, LISC, LMU, MAL, NHT, SRGH).

Type. MADAGASCAR: Centre, massif de Manonarivo, bois humides, 1000 m, fl., *Perrier de la Bâthie* 1873 (holotype: P [P00094725], image seen!).

Specimens examined. KENYA. Nandi North District, Spetonok, 0°22'32"N, 35°00'29"E, elevation 2000 m, 22 April 2018, *FOKP-1530* (EA, HIB).

Distribution. Madagascar, Malawi, South Africa, Tanzania, Zambia, Zimbabwe, Kenya (new record). (Fig. 2)

Habitat and phenology. Tropical rain forest floor margins at elevation 200–2000 m a.s.l.. Flowering from March to April was observed in Kenya.

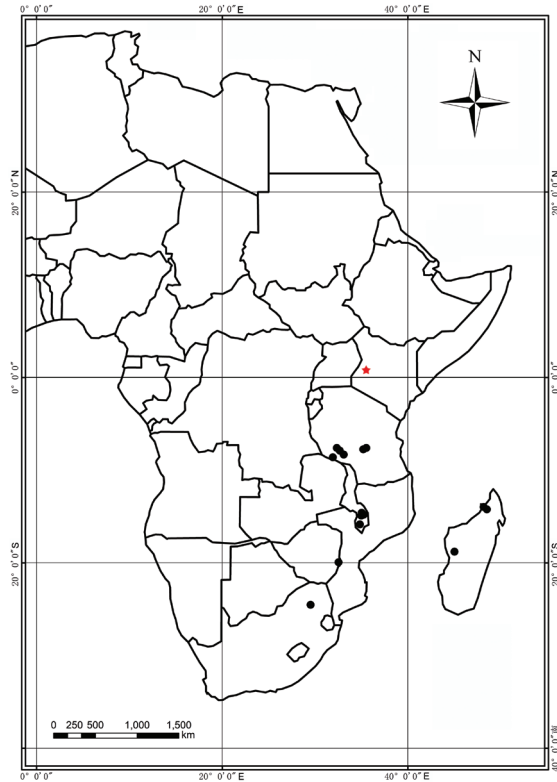


Figure 2. Distribution map of *Nervilia lilacea*, with the new collection *FOKP-1530* shown by a red star [other points re-drawn after Petersson (1990, 1991) and specimen records]

Acknowledgments

Thanks to the Kenya Forest Service for the permission of field investigation. This work was supported by a grant from Sino-Africa Joint Research Center, CAS (SAJC201614).

References

- Freycinet LCD (1829) Voyage autour du monde, entrepris par ordre du roi. Chez Pillet Aîné, Paris, 522 pp.
- Govaerts R, Dransfield J, Zona S, Hodel DR, Henderson A (2019) World checklist of Orchidaceae. Facilitated by the Royal Botanic Gardens, Kew. <http://wcsp.science.kew.org> [Retrieved 29 October 2019]
- Jumelle H, Perrier H (1912) Les *Nervilia* et les *Bulbophyllum* du Nord-Ouest de Madagascar. *Annales de la Faculte des Sciences de Marseille* 21: 187–216.
- Nusbaumer L, Cribb P, Gautier L (2011) *Nervilia gassneri* Börge Pett. from Africa is conspecific with the Malagasy *N. liacea* Jum. & H.Perrier. *Candollea* 66(1): 127–130. <https://doi.org/10.15553/c2011v661a14>
- Olszewski TS (2004) A provisional checklist of the continental African Orchidaceae. 5. Vanilloideae. *Polish Botanical Journal* 49(2): 123–134.
- Petersson B (1990) Studies in the genus *Nervilia* (Orchidaceae) in Africa. *Nordic Journal of Botany* 9(5): 487–497. <https://doi.org/10.1111/j.1756-1051.1990.tb00539.x>
- Petersson B (1991) The Genus *Nervilia* (Orchidaceae) in Africa and the Arabian Peninsula. *Orchid Monographs* (Vol. 5). Rijksherbarium/Hortus Botanicus, Leiden, 90 pp.
- Stewart J, Campbell B (1996) *Orchids of Kenya*. Timber Press Inc, Portland Oregon, 146–147.